

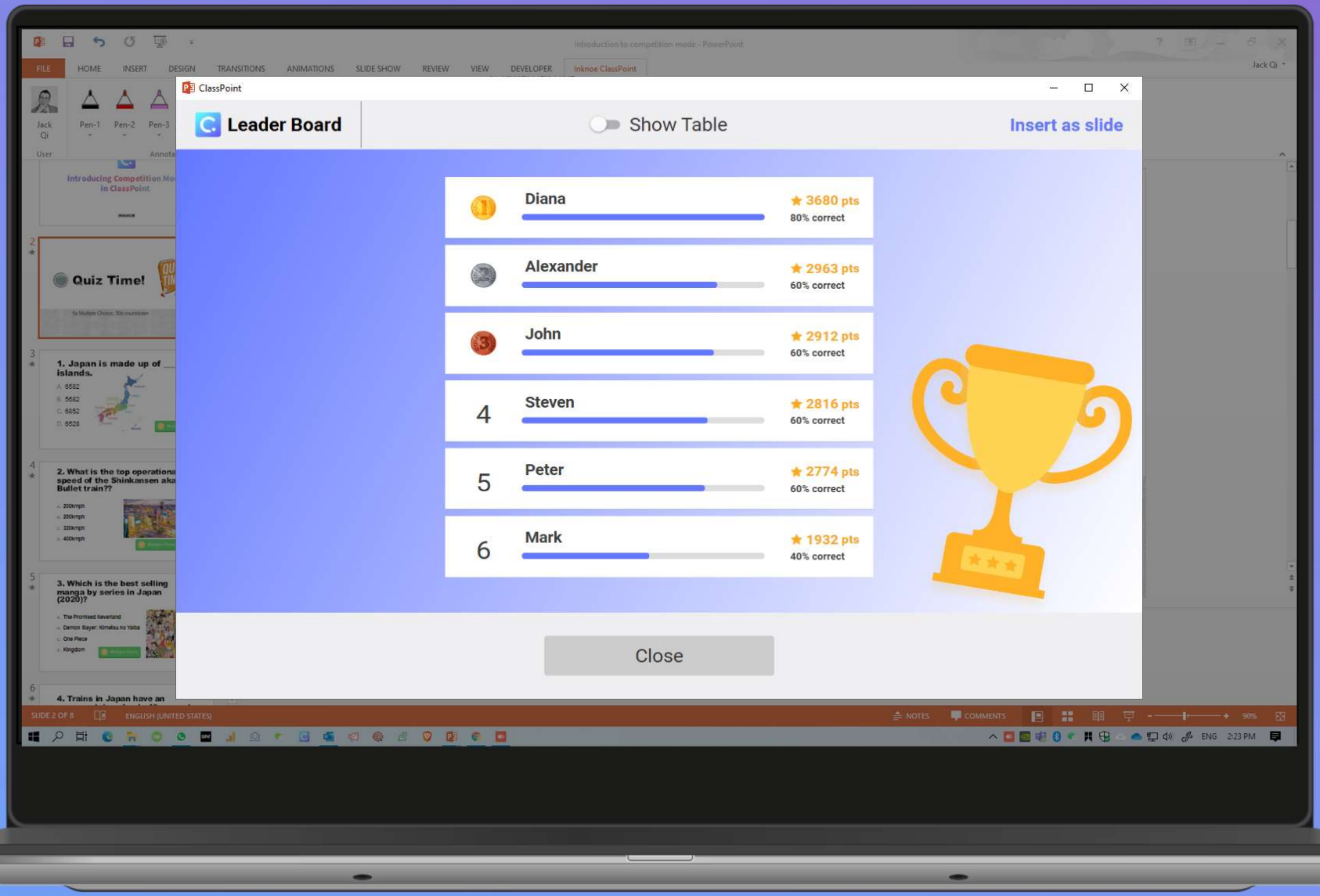
03

Score/rank students

Design quiz competitions within PowerPoint and gamify your students' learning experience. Besides being fun, students will be scored/ranked automatically, and their answers can be exported for further analytics.

[Click to find out more about
Leader board](#)

<https://youtu.be/GD52ZC2CINQ>



ClassPoint


Leader Board

Show Table

Insert as slide

1	Diana	3680 pts	80% correct
2	Alexander	2963 pts	60% correct
3	John	2912 pts	60% correct
4	Steven	2816 pts	60% correct
5	Peter	2774 pts	60% correct
6	Mark	1932 pts	40% correct

Close



Introducing Competition Mode in ClassPoint

Quiz Time!

1. Japan is made up of islands.

2. What is the top operational speed of the Shinkansen aka Bullet train??

3. Which is the best selling manga by series in Japan (2020)?

4. Trains in Japan have an

Table of summary can be generated and exported into CSV

The screenshot shows a PowerPoint presentation in the background with a ClassPoint Leader Board overlay. The Leader Board is titled "Leader Board" and has a "Show Table" toggle and an "Export as CSV" button. The table displays the following data:

Rank	Name	Score	% Correct	Participation	Q1	Q2	Q3	Q4	Q5
1	Diana	3680	80%	5 of 5	A	C	B	A	A
2	Alexander	2963	60%	5 of 5	B	D	B	A	A
3	John	2912	60%	5 of 5	D	C	B	A	B
4	Steven	2816	60%	5 of 5	C	B	D	A	A
5	Peter	2774	60%	4 of 5	C	C	A	A	
6	Mark	1932	40%	5 of 5	A	A	D	A	A
7	Kathleen	1874	40%	5 of 5	A	C	B	B	B
8	Grace	1848	40%	5 of 5	C	B	D	A	B
9	Lisa	1771	40%	5 of 5	B	B	A	A	A
10	Bobby	1744	40%	5 of 5	B	D	D	A	A
11	Zachary	1682	40%	5 of 5	A	C	A	A	B
12	Nicholas	1670	40%	5 of 5	D	C	C	A	B

The background PowerPoint slide is titled "Quiz Time!" and contains several quiz questions. The first question is "1. Japan is made up of islands." with options A. 6552, B. 5652, C. 6552, and D. 6523. The second question is "2. What is the top operational speed of the Shinkansen aka The Bullet train?" with options A. 200km/h, B. 280km/h, C. 320km/h, and D. 420km/h. The third question is "3. Which is the best selling manga by series in Japan (2020)?" with options A. The Promised Neverland, B. Demon Slayer: Kimetsu no Yaiba, C. One Piece, and D. Kingdom. The fourth question is "4. Trains in Japan have an".